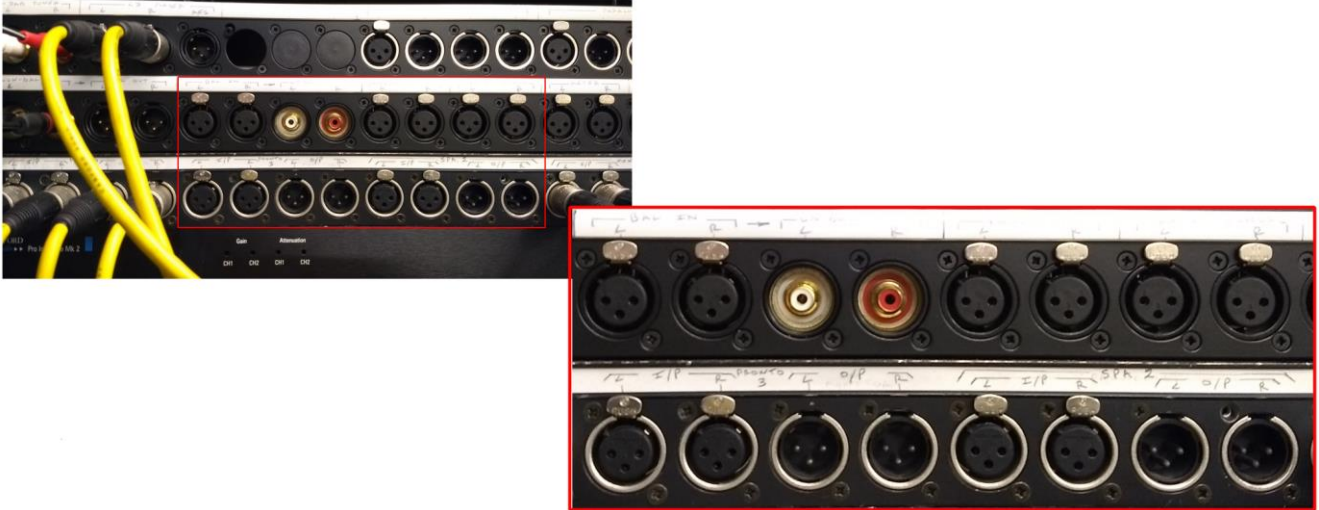


## 72-8192 PatchCAD PRO - 'Walkthrough'

PatchCAD PRO is a straightforward application allowing the user to quickly and effectively produce professional looking labels for termination panels and jackfields. This 'walkthrough' is to guide you through the process of a simple project highlighting some features of the application along the way. The project illustrated was to spruce up the look of the Canford Tech Support Lab rack termination panels. As with all things in life the connections to and from the panels has developed over the years resulting in hand written designation strips. Whilst this is fine as a temporary measure with the aid of PatchCAD PRO we were sure that we could produce something somewhat clearer.

Essentially we wanted to go from looking like this:-



To this!



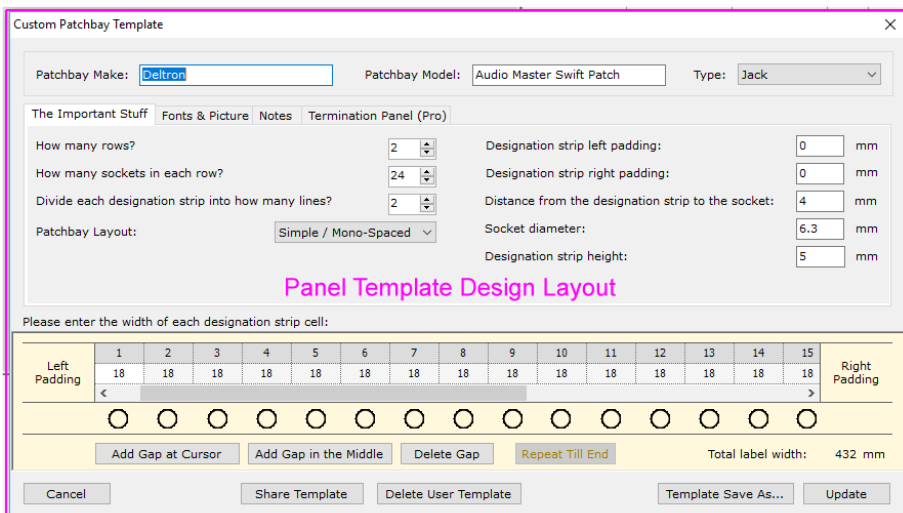
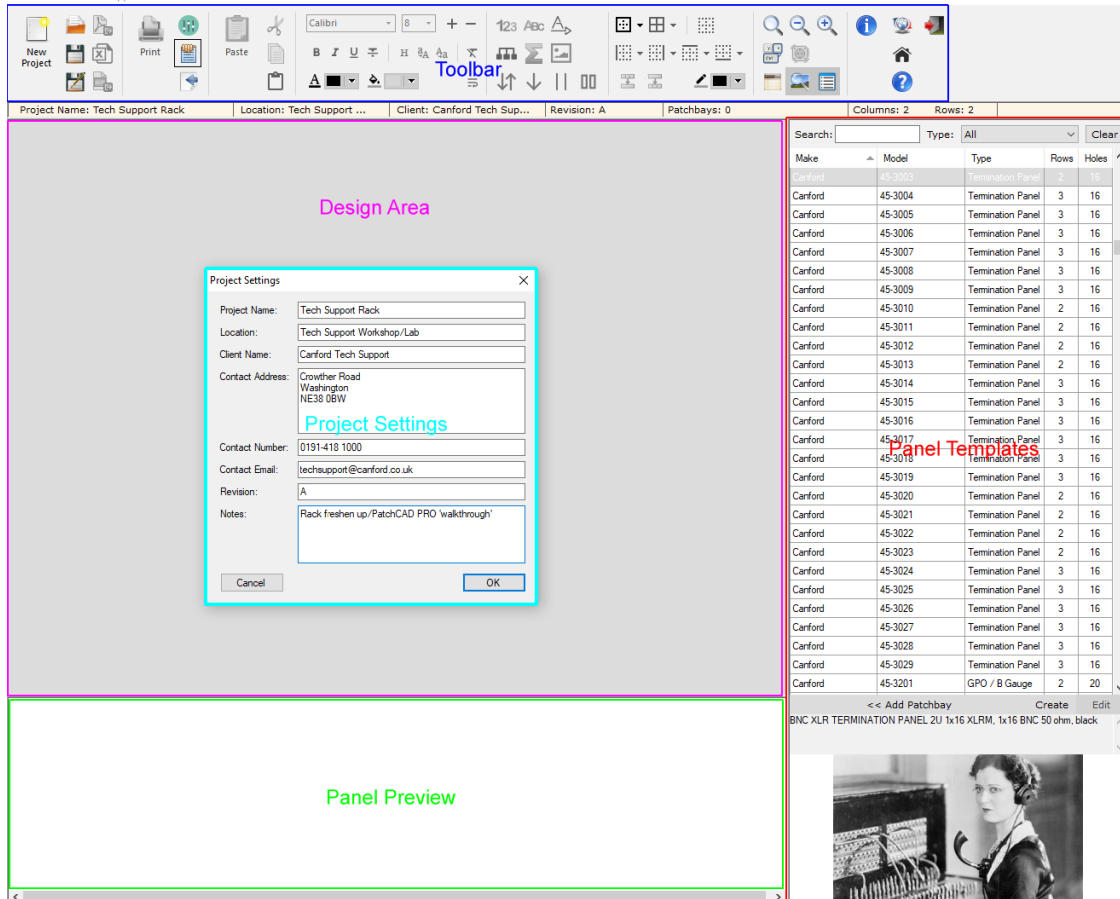
So we double clicked on the PatchCAD PRO executable file and dived straight into the design.



PatchCAD.exe

## 72-8192 PatchCAD PRO - 'Walkthrough'

After the application loads you are presented a toolbar along the top of the screen, (full list of toolbar functions are listed in **"PatchCAD PRO Toolbar in detail"** document available from the PatchCAD PRO product page on the Canford web site), a list of panel/jackfield templates to the right and a panel/jackfield preview to the bottom of the screen. Note that the template and preview panes can be resized by dragging the border with your mouse. The panel templates/preview can also be toggled on/off if desired by using the appropriate key commands or item from the toolbar. In the middle of the screen where the design takes place you are encouraged to **"Click on the New Project icon to add a patchbay"**. By doing so you are presented with a dialogue box where you can enter the project details like so.



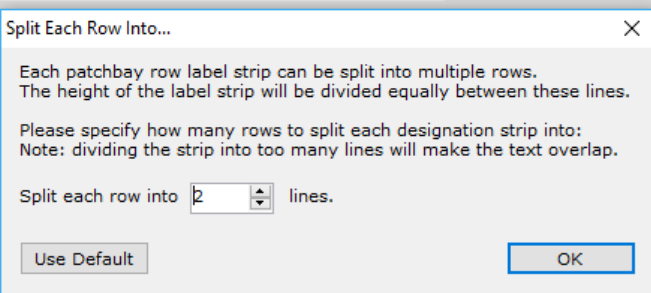
Add/Create/Edit panel template

Images for new/edited panels can be included

Once your project details are entered and the 'OK' button pressed you would then, (after first saving your project onto your hard drive and titling such appropriately), from the Panel Template area search for your first panel/jackfield for your project. If there is a not a template for the panel/jackfield you are to use for your project you have options to create a template from scratch. Note the edit button will only allow editing of a user created templates.

## 72-8192 PatchCAD PRO - 'Walkthrough'


The panels in the Tech Support Lab are a 2U, 2 row, 16/row universal punch out termination panel as well as an additional 1U, 1 row, 16x universal punch out termination panel. Inserting the 2U panel first we made a start on our design.



Canford	45-3376	Termination Panel	3	7
Canford	45-3377	Termination Panel	3	7
Canford	45-3378	Termination Panel	3	7
Canford	45-3380	Termination Panel	1	12
Canford	45-3381	Termination Panel	1	12
Canford	45-3387	Termination Panel	1	16
Canford	45-3387SYD	Termination Panel	1	16
Canford	45-3388	Termination Panel	2	16
Canford	45-3389	Termination Panel	3	16
Canford	45-3390	Termination Panel	1	16
Canford	45-3390SYD	Termination Panel	1	16
Canford	45-3390SYL	Termination Panel	1	16
Canford	45-3391	Termination Panel	1	16
Canford	45-3392	Termination Panel	2	16

<< Add Patchbay
Create
Edit

CANFORD UNIVERSAL CONNECTION PANEL Kit 2U 2x16, dark grey



Upon selecting the 'Add Patchbay' option from the panel templates you are given the option to override the default number of lines of text the designation strip will be split into. For this example we kept the default 2 rows/lines of text.

Once you complete this dialogue box the design area is populated with cells akin to a spreadsheet and a representation of the panel is presented in the Panel Preview, (use the scroll bars to view sections of the panel not visible). Simply double click a cell and annotate accordingly. The toolbar contains text attributes that you can alter as well as tooling to merge/unmerge cells and cell outline options.

Project Name: Tech Support Rack
Location: Tech Support ...
Client: Canford Tech Sup...
Revision: A
Patchbays: 1

		Canford								45-3388								Termination Panel	
1	A	1	2	3	4	5	6	7	8	9	10	11	12	13	14	15	16		
		DAB																	
		L	R																

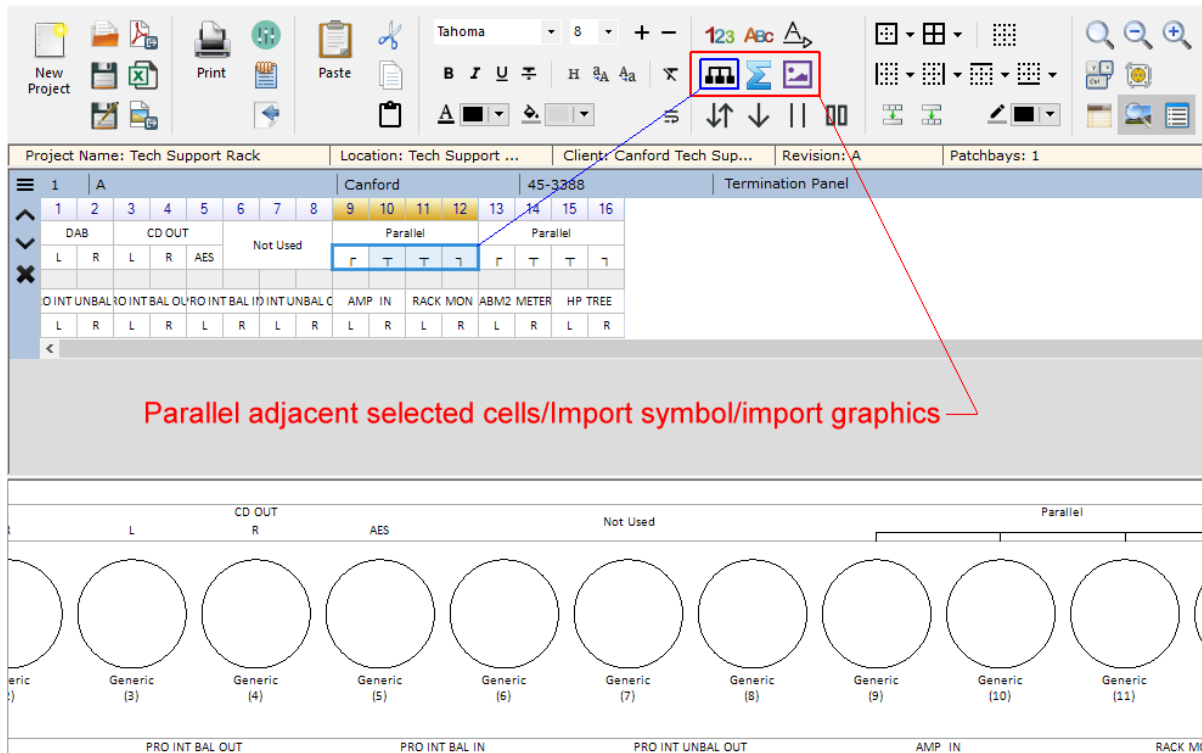
Calibri | 8 | + - | 123 Abc A

**B** *I* U ~~ABC~~ | H Aa Aa X

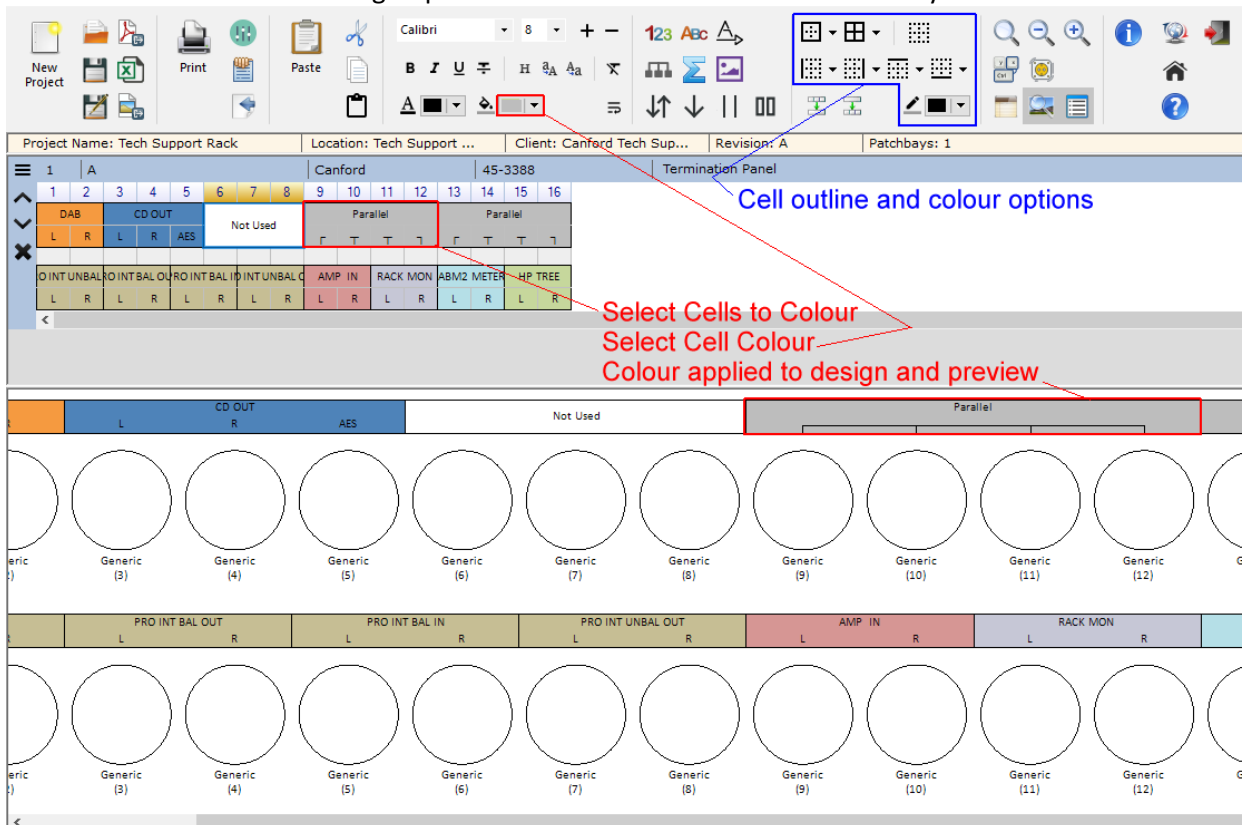
L DAB R

## 72-8192 PatchCAD PRO - 'Walkthrough'

Here is a screenshot of the completed annotations, arranged in merged cells as appropriate and even a parallel symbol or two has been inserted. All text is centre aligned in the cell area. Don't worry if the text disappears outside of the cell when displayed in the design area. Check the preview to see how the label will actually appear on the designation strip once printed. Adjust text attributes if required. As always, once we completed an operation we saved the project.



Adding a splash of colour and outline aid visual clarity.



We took a moment and admired the fruits of our labours ....then we saved the project!

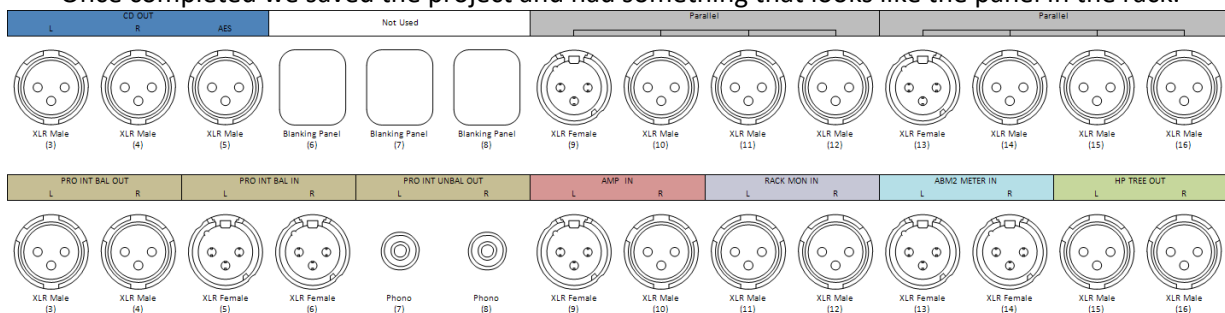
## 72-8192 PatchCAD PRO - 'Walkthrough'

At this point you could just print off your labelled designation strip, install and sit back thinking of a job well done. However PatchCAD PRO can go further displaying graphical representations of the connectors to be installed, (or in this case already installed), which can be useful for reference, install guidance, system documentation etc. Selecting the configure sockets symbol from the toolbar the dialogue box allows you to select from many standard connectors to be represented in your termination panel, (note that for templates other than Termination Panels this option is not available). This editor also allows a connector label to be added underneath each connector graphic if desired, (by default these are simply numbered).

The screenshot shows the PatchCAD PRO interface. At the top is a standard Windows-style toolbar with icons for Print, Paste, and various drawing tools. Below the toolbar is a status bar with fields for 'Support Rack', 'Location: Tech Support ...', 'Client: Canford Tech Sup...', 'Revision: A', and 'Patchbays: 1'. The main workspace displays a rack panel with columns labeled 'Canford' and '45-3388'. A 'Termination Panel' is highlighted. A red box highlights a 'Configure Sockets' dialog box. The dialog box contains a table with columns numbered 1 through 7. The 'Row 1 Type' and 'Row 2 Type' are set to 'Phono' for columns 1 and 2, and 'Generic' for columns 3 through 7. A dropdown menu is open over the 'Generic' selection in column 3, showing options: 'General', 'Blanking Panel', 'Generic', 'Audio', 'Bantam', 'TS Jack', 'TRS Jack', 'XLR Male', and 'XLR Female'. Below the dialog box, a row of connector graphics is shown, labeled 'Generic (7)' through 'Generic (15)'. A red arrow points from the dialog box to the rack panel, with the text 'Configure sockets allows graphical representations of connectors in panel'.

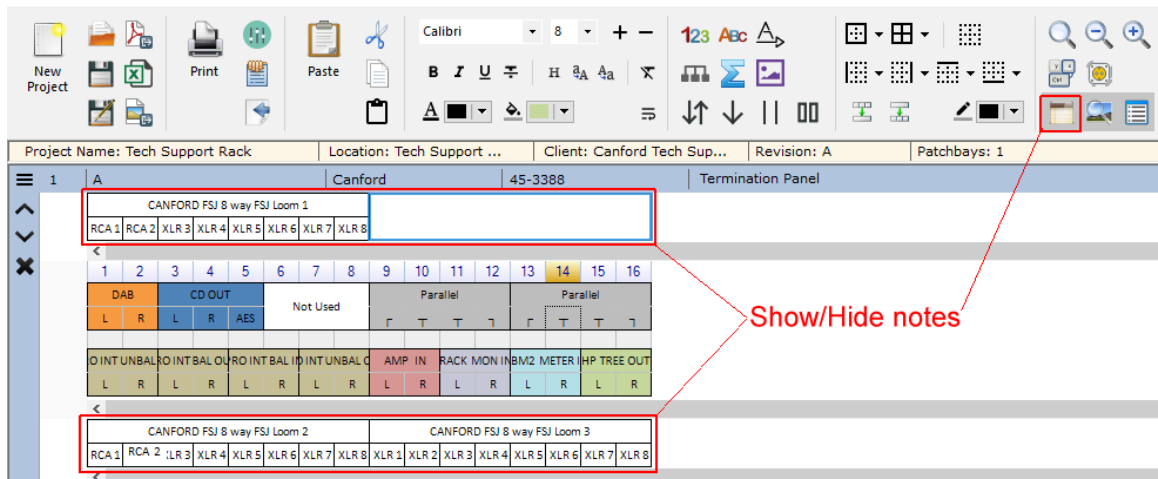
**NOTE:** The connector previews are for illustrative purposes only. The user must ensure that when creating custom designs or modifying preset templates that the panel you are wishing to use can accommodate the connector chosen and that the pitch is appropriate for fitting such, ('in real life' so to speak).

Once completed we saved the project and had something that looks like the panel in the rack.

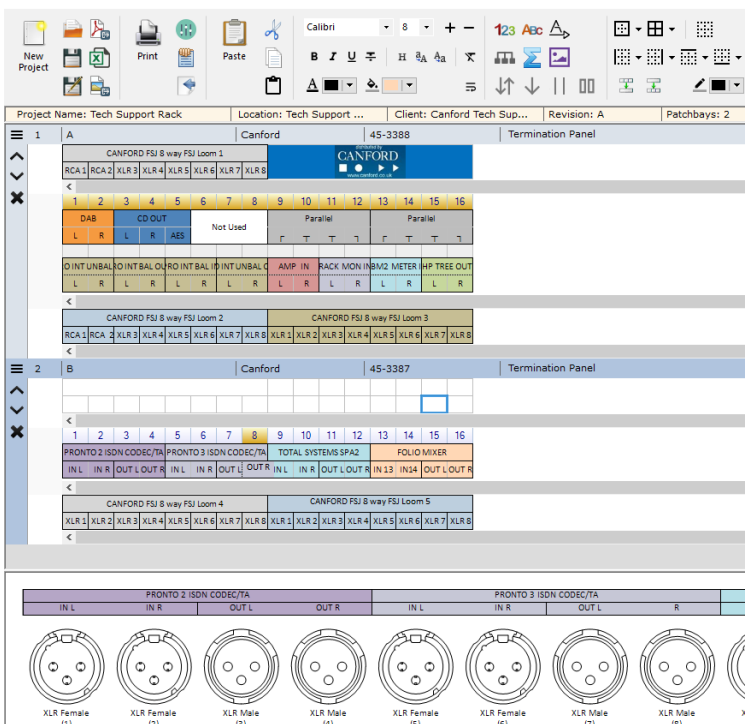
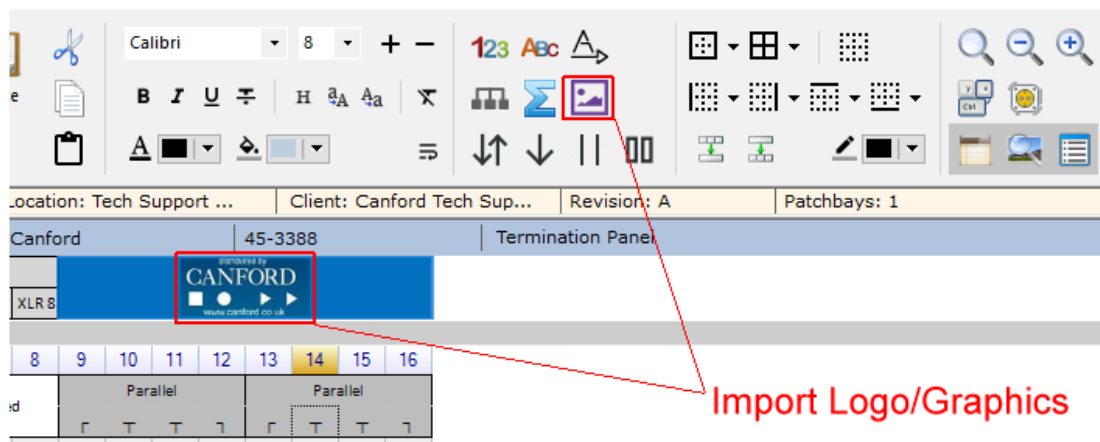


## 72-8192 PatchCAD PRO - 'Walkthrough'

Further to this we also added notes to the panel design again for reference, installation and guidance purposes/documentation. In this example we noted the cable looms used to make equipment connections to and from the panel.



Observe that the same text and cell formatting options are available for the notes as they are for the main panel design. You can also import symbols and graphics into the notes or main panel designation strip design such as a company logo as we have done in the following example.

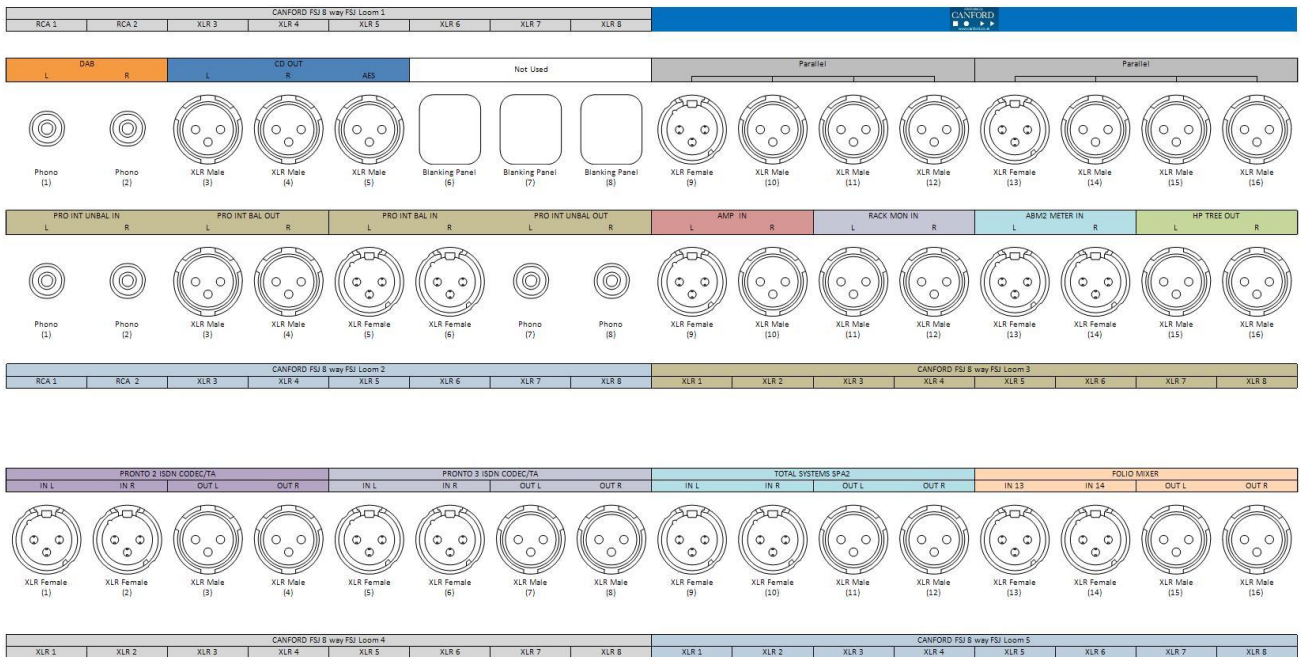


We saved the project then imported the second panel template and repeated the process. Note preview pane shows only the currently selected panel. No prizes for knowing that after all this effort we saved the project.



## 72-8192 PatchCAD PRO - 'Walkthrough'

At this point of the exercise we had the option of not only printing out the labelled designation strip but also export the project as a PDF document, Excel spreadsheet, (note that graphics imported into PachCAD PRO cells are not exported into Excel due to limitations of permitted data exchanges into this application), or Image file for distribution to interested parties or inclusion in system documentation or install notes. Importing and exported a panel image would ....errrm ... look something like this!



Selecting the print option displays the following options.

Printer: \\Tech Support  
 Paper Size: A4  
 Pages: From: 1 To: 2

Orientation:

Mode:  Single Patchbay  All Patchbays  Single Row

Patchbays:  1 - A  2 - B

Options:  Print Titles  Main Cutting Guides  Print Sockets  Sockets Cutting Guides  Print Notes  Print Sockets Labels

Buttons: Print Cancel Preview

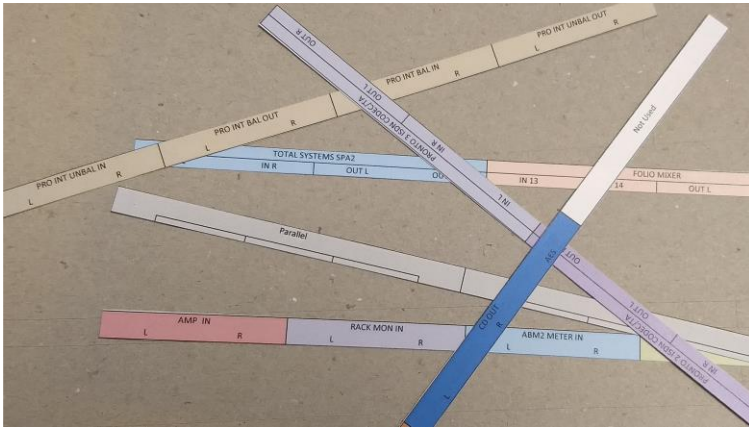
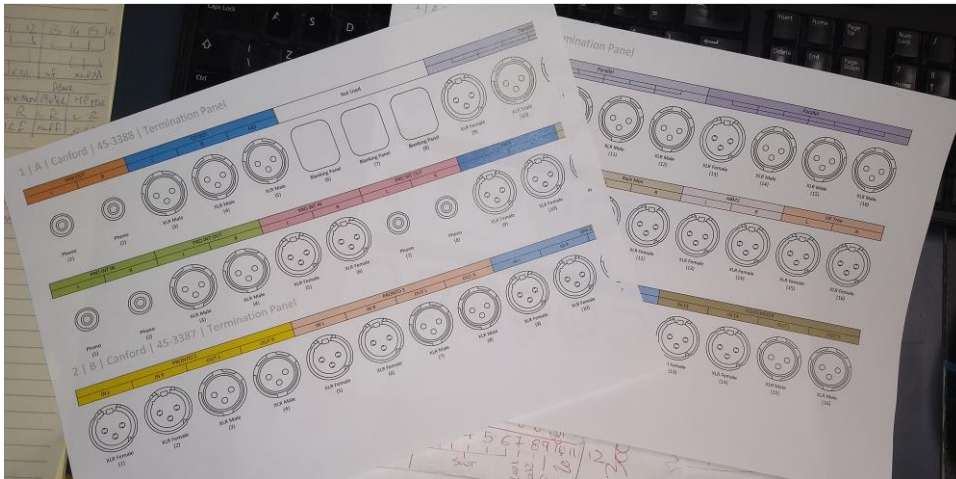
---

1 | A | Canford | 45-3388 | Termination Panel

2 | B | Canford | 45-3387 | Termination Panel

## 72-8192 PatchCAD PRO - 'Walkthrough'

Here we selected an appropriate printer, page size and orientation as well as the 'All Patchbays' option for our project. We disabled printing notes but left the cutting guides to produce a couple of sheets of A4 paper that had enough overlap to butt join the labels together, PatchCAD PRO cleverly handles an appropriate overlap so that users do not have worry about such minutiae!



We carefully cut the labels, (checking the number of fingers and thumbs left at the end of the operation, 7 on each hand....yep that's right).

Throwing the designation strips onto the panel results in a more colourful and legible label.



Hurrah! Job done.

The project can be recalled at a later date should there be changes to the rack and its connections allowing revised designation strips and images for documentation to be exported/printed as required.